

[www.lewitt-audio.com](http://www.lewitt-audio.com)



ADD  
MORE  
**POWER**

TO  
YOUR

**TUNES.** MTP 540 DM / DMs

SOUNDS LIKE  **LEWITT**

Thank you that you have opted for a LEWITT product. In this operating manual you will learn more about your LEWITT microphone, its handling and its proper usage.

Music professionals know that it's often the smallest details that make all the difference in vocal and instrumental recordings.

With our MTP series, we aim to exceed artists' and audio engineers' expectations of reproduction accuracy and isolation of the main sound source. The new flagships among LEWITT's performance microphones – the MTP 840 DM and the 940 CM are true milestones of audio technology.

All MTP microphones are professional-quality handheld dynamic and condenser performance microphones have been developed specifically for the authentic, crystal-clear reproduction of vocals and are also well-suited for instrumental applications.

Customized frequency responses, a rugged construction, high gain before feedback and extremely low handling noise make all models of the MTP series the perfect fit for any application, any performance and any setting.

LEWITT wishes you a lot of fun and success with this product!

# MTP 540 DM/DMs

---

The product

LEWITT's MTP 540 DM and MTP 540 DMs are high-performance cardioid dynamic handheld microphones optimized for vocal applications setting new standards of sound quality in both demanding studio recordings and onstage use.

The MTP 540 DM and DMs combine the advanced technological features so essential to memorable and authentic vocal reproduction, providing just the kind of performance you expect in a top-notch professional dynamic microphone: the elastic shock-mount system effectively cuts down handling noise, while a built-in spherical wind and pop filter compliments specially tailored frequency response to ensure consistently rich and powerful output in any setting.



MTP 540 DM

MTP 540 DMs

### Features

- Frequency response shaped specifically for demanding vocal applications, with brightened midrange and bass roll-off
- Uniform cardioid pickup pattern for maximum isolation of the main sound source
- Highly shock-proof capsule minimizes handling noise
- Easily withstands high sound pressure levels
- Effective integrated acoustic pop and windshield offers excellent protection without compromising high-frequency clarity
- Rock-solid full-metal, die-cast body for rough daily touring routine
- Hardened hexagonal ruthenium-galvanized steel mesh grille to prevent wear and abuse
- Minimally affected by varying load impedance
- The MTP 540 DMs features a convenient recessed on/off slide switch
- Corrosion-resistant gold-plated 3-pin XLR output connector
- Comes in a cardboard box with foam layers; includes MTP 40 MCs shock mount and DTP 40 Lb artificial leather bag

### Top applications

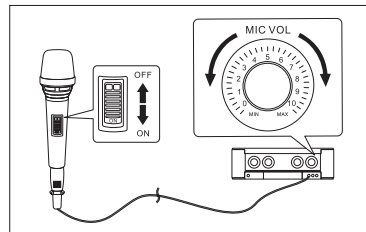
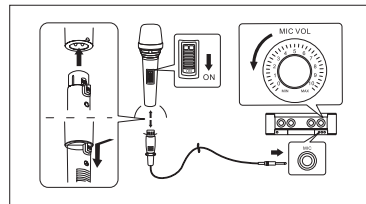
- Lead and background vocals
- Live and studio applications

### Connecting and Disconnecting the Microphone Cable

- Before establishing connection, make sure that the microphone and the component (e.g. amplifier) are switched off.
- Lower the volume of the component (e.g. amplifier) before connecting the microphone.
- Insert the connector into the microphone socket. Align the key on the connector with the groove in the microphone, and then push the connector into the microphone until it clicks.
- To disconnect the cable from the microphone, pull the connector away from the microphone while depressing the latch lock.

### How to Use

- Set the switch to ON when using the microphone, set it to OFF when it is not in use (only applicable if your microphone has an ON/OFF switch).
- When using the microphone, do not cover any part of the grille with your hand to ensure best sound quality and accurate directivity characteristic.



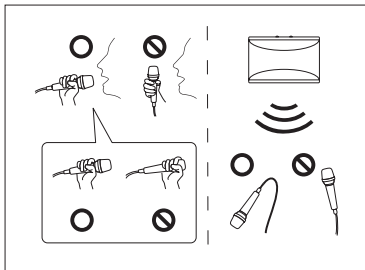
### Hints

1. In order to prevent feedback (howling):

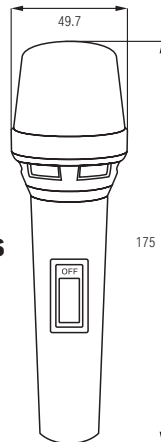
- Lower the volume.
- Place the microphone so that it is not pointed to the speaker and that there is a sufficient distance between the microphone and the speaker.
- Do not cover the lower part of the grille with your hand.

2. Positioning the microphone close to the

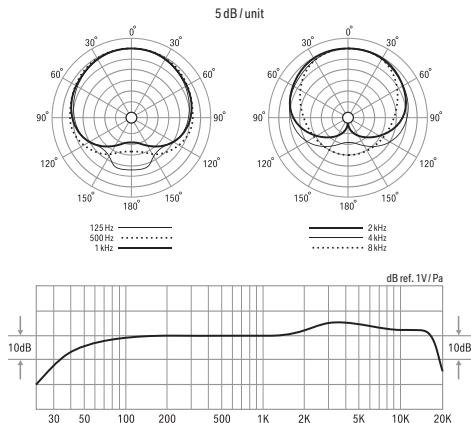
sound source causes the so-called proximity effect (a boost in the low frequency response). This phenomenon can be used to create a richer and warmer bass sound.



### Dimensions



## Tech graph



## Tech data

- Acoustical operating principle: dynamic, moving coil
- Directional pattern: cardioid
- Frequency range: 60 ... 16.000 Hz
- Sensitivity: 2 mV / Pa (-54 dBV)
- Rated impedance: < 300 ohms
- Connector: gold plated 3-pin XLR
- Dimensions: 49 dia. x 175 mm  
1,9 dia. x 6,9 inch
- Net weight: 400 g  
14,1 oz.

## Accessories



MTP 40 MCs



DTP 40 Lb





### Cautions

- The capsule is a sensitive, high precision component. Make sure you do not drop it from high heights and avoid strong mechanical stress and force.
- To ensure high sensitivity and best sound reproduction of the microphone, avoid exposing it to moisture, dust or extreme temperatures.
- Keep this product out of the reach of children.
- Do not use force on the switch or cable of the microphone.
- When disconnecting the microphone cable, grasp the connector and do not pull the cable.
- Do not attempt to modify or fix it. Contact qualified service personnel in case any service is needed. Please do not disassemble or modify the microphone for any reasons as this will void users warranty.
- The casing of the microphone can be cleaned easily using a wet cloth, never use alcohol or another solvent for cleaning. If necessary the foam wind stopper can be washed with soap water. Please wait till it is dry before using it again.
- Also please refer to the owner's manual of the component to be connected to the microphone.

## Warranty

All products manufactured by LEWITT GmbH feature a limited two-year warranty. This two-year warranty is specific to the date of purchase as shown on your purchase receipt.

LEWITT GmbH shall satisfy the warranty obligations by remedying any material or manufacturing faults free of charge at LEWITT's discretion either by repair or by exchanging individual parts or the entire appliance. Any defective parts removed from a product during the course of a warranty claim shall become the property of LEWITT GmbH.

While under warranty period, defective products may be returned to the authorized LEWITT dealer together with original proof of purchase. To avoid any damages in transit, please use the original packaging if available. Please do not send your product to LEWITT GmbH directly as it will not be serviced. Freight charges have to be covered by the owner of the product.

For further information please visit [www.lewitt-audio.com](http://www.lewitt-audio.com) or check your warranty card.

# MTP 540 DM/DMs

## Regulatory information



LEWITT GmbH declares under its sole responsibility that MTP 540 DM / DMs complies with the European directive 2004/108/EC. The product has been tested according to harmonized European standards:

EN 55013:2001+A1:2003+A2:2006

EN 55020:2007

EN 61000-3-2:2006

EN 61000-3-3:1995+A1:2001+A2:2005

Product testing was carried out by TIMCO Engineering Inc., notified body number 1177.

LEWITT GmbH hereby declares under its sole responsibility that MTP 540 DM / DMs has been tested and conforms to the following FCC and ANSI standards:

FCC Part 15:2008 Section 15.109

ANSI C63.4:2003

Product testing was carried out by INTERTEK Testing Services Shenzhen Ltd.



WEEE note: Electronic waste has to be collected separately. Please bring this device to a local recycling center at the end of its life time.

Manufacturers signature:

Date: 18th November 2010

Place: Vienna, AUSTRIA

DI Roman Perschon

CEO – Lewitt GmbH

Declaration of conformity can be downloaded at [www.lewitt-audio.com](http://www.lewitt-audio.com) or obtained from [info@lewitt-audio.com](mailto:info@lewitt-audio.com).

Mooslackengasse 17  
1190 Vienna  
AUSTRIA  
[info@lewitt-audio.com](mailto:info@lewitt-audio.com)





**LEWITT**