

AA.1

Amplifier Attenuator

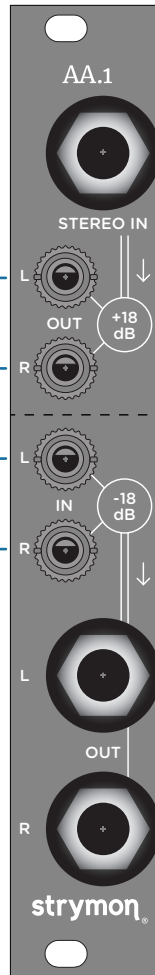
USER MANUAL

Overview

The missing link between guitars, guitar pedals, and your Eurorack gear.

L and R OUT +18 dB: Designed to patch into Eurorack inputs. Signal source is **STEREO IN**. Signal gain is +18dB.

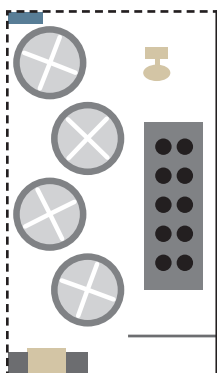
L and R IN: Attenuates Eurorack level signals by -18dB.



STEREO IN: Amplifies Guitar Level signals by +18dB. Tip is routed to **L OUT**, Ring is routed to **R OUT**. For mono signals, use **L OUT**.

L and R OUT: Designed to patch into Guitar Level Products. Signal source is **L and R 1/8" IN**. Signal attenuation is -18 dB.

Connectors

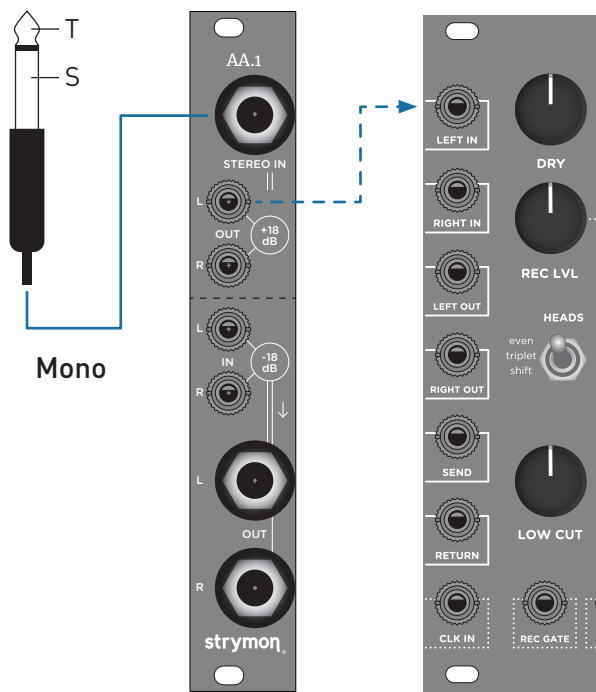


- +12V: 10mA max
- 12V: 10mA max
- +5V: 0mA max

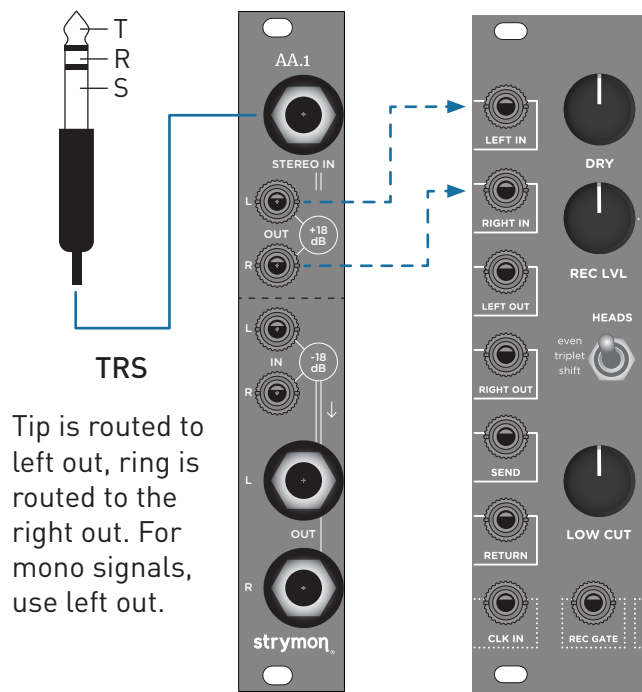
Located on the right side, center of PC board

Setup Examples

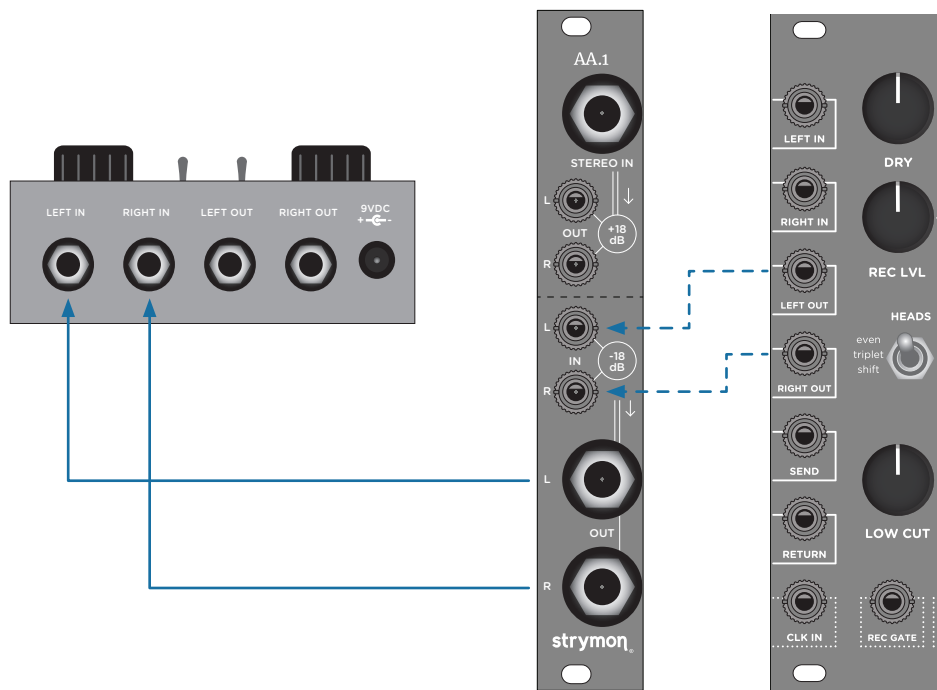
1 Mono Guitar



2 Stereo Input

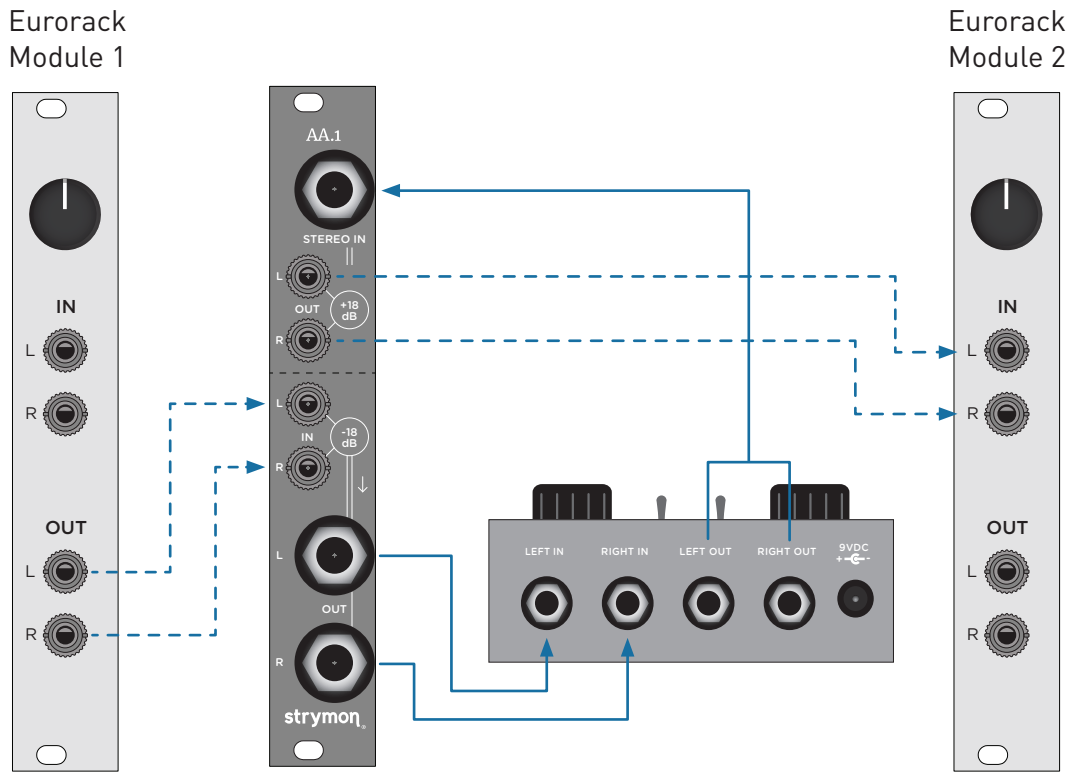


3 Out to Pedal



Setup Examples (cont.)

4 Eurorack Insert



Specifications

Amplifier:

- Gain: +18 dB
- Max Input Level (before soft clipping): 2.25 Vpp
- Max Output: 18 Vpp
- Input Impedance: 1 MΩ
- Output Impedance: 1 kΩ
- Dynamic Range: 20Hz – 20kHz, +/- 1dB

Attenuator:

- Gain: -18 dB
- Max Input Level (Nominal): 20 Vpp
- Max Output Level (Nominal): 2.5 Vpp
- Input Impedance: 8 kΩ
- Output Impedance: 880 Ω
- Dynamic Range: 20Hz – 20kHz, +/- 1dB

Power:

- +12V rail: 10 mA
- -12V rail: 10 mA
- +5V rail: 0 mA

Dimensions:

- Rack Width: 4hp
- Rack Depth: 38mm, 1.5"

Questions?

For additional help with setup please visit strymon.net/support/aa1 or email us at support@strymon.net.

STRYMON NON-TRANSFERRABLE LIMITED WARRANTY

Warranty

Strymon warrants the product to be free from defects in material and workmanship for a period of two (2) years from the original date of purchase when bought new from an authorized dealer in the United States of America or Canada. If the product fails within the warranty period, Strymon will repair or, at our discretion, replace the product at no cost to the original purchaser. Please contact your dealer for information on warranty and service outside of the USA and Canada.

Exclusions

This warranty covers defects in manufacturing discovered while using this product as recommended by Strymon. This warranty does not cover loss or theft, nor does the coverage extend to damage caused by misuse, abuse, unauthorized modification, improper storage, lightning, or natural disasters.

Limits of Liability

In the case of malfunction, the purchaser's sole recourse shall be repair or replacement, as described in the preceding paragraphs. Strymon will not be held liable to any party for damages that result from the failure of this product. Damages excluded include, but are not limited to, the following: lost profits, lost savings, damage to other equipment, and incidental or consequential damages arising from the use, or inability to use this product. In no event will Strymon be liable for more than the amount of the purchase price, not to exceed the current retail price of the product. Strymon disclaims any other warranties, expressed or implied. By using the product, the user accepts all terms herein.

How to Obtain Service Under this Warranty

For North American customers: Contact Strymon through our website at strymon.net/support for Return Authorization and information. Proof of original ownership may be required in the form of a purchase receipt.

For International Customers: Contact the Strymon dealer from which the product was purchased from in order to arrange warranty repair service.